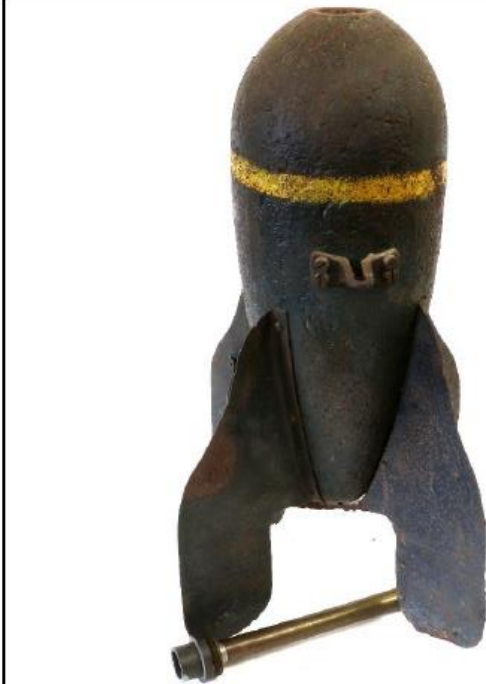
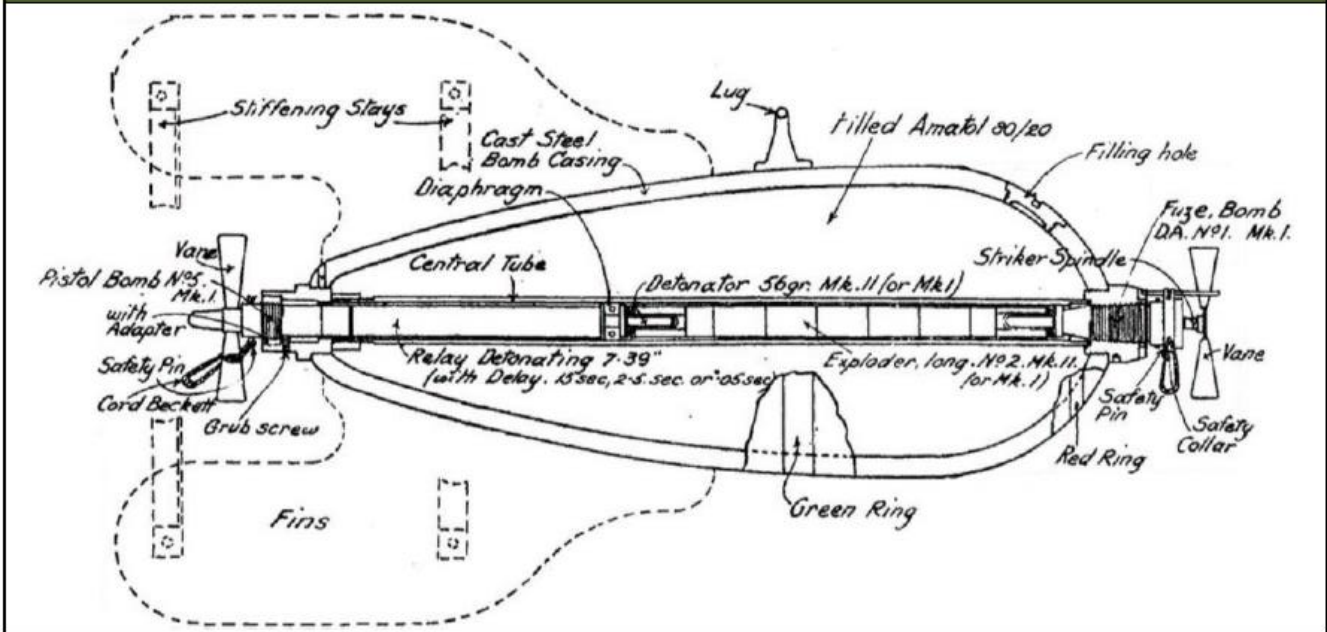


112lb High Explosive Bomb



Specifications

Description	Pear-shaped with nose and tail fuzes and braced four-fin tail	Function	General Purpose (Blast and Fragmentation)
Dimensions	Total 739mm x 457mm (29.1" x 18") Body 572mm x 229mm (22.5" x 9")	Activation by	Impact fuze
Material	Steel	Variations	Variants made of Iron

Information is accurate for indicative purposes. Photographs used are in the public domain. Any use of copyrighted © material is unintentional.